

SBR Events – SKEGNESS TRIATHLON & AQUATHLON 2018
FINAL RACE INFORMATION
RICHMOND HOLIDAY CENTRE, RICHMOND DRIVE, SKEGNESS, LINCOLNSHIRE PE25 3TQ
SUNDAY 13TH MAY 2018

Please note that all athletes will be required to show some form of photographic identification

Welcome to the 4th Skegness Sprint Triathlon (with Aquathlon & Aquabike options)

We would like to welcome everyone to Skegness Sprint Triathlon organised by SBR Events Limited, with the assistance of the Fresh Fitness, Richmond Holiday Centre and East Lindsey District Council.

Confirmation of Entry

Competitors are requested to check the online participant list here [Skegness Triathlon 2018 Participant List](#) (it is also on a document posted on the web site to confirm that they are on the participants list.

BTF Race Rules

You are recommended to familiarise yourself with the British Triathlon rules and regulations. Under these rules it is mandatory that all competitors must wear an approved cycle helmet, that all cycles must be in a road worthy condition and that all competitors are insured by third party civil liability insurance – British Triathlon Members are insured as part of their membership package, and all other competitors will be required to purchase a Day Licence- this is supplied as part of your £45 entry fee. Please note that there are rules that may lead to disqualification(DQ). The full list of British Triathlon Federation rules - please click this link to read them [British Triathlon Rules - updated 2018](#)

or go to www.britishtriathlon.org or telephone the British Triathlon Federation on 01509 226161.
A condensed list of the 2018 rule changes is [here](#)

Illegal & Banned Equipment:

We refer you to [British Triathlon Rules - updated 2018](#) for detailed information. Calf guards are not allowed to be worn in a non-wetsuit swim. You will be asked to remove them prior to the swim if you are wearing any; if you refuse we have been advised that you will be disqualified. You cannot wear tempo timers, metronomes or anything that assists your pace. You can wear a watch to track your time but not anything that beeps to assist your pace.

BTF Licences

All athletes MUST produce their race licences at registration if you are a member & paid the BTF member entry fee. If you forget your licence, or you have not paid the BTF levy due with your application, you will have to pay £5 for a BTF day licence at registration.

What Will You Need?

As this event attracts all types of athletes, from complete novices to international standard athletes, you will see bikes worth from £50 to £5000+. Some people wear tri suits & regular running clothes. There are certain items which you will need: a tri suit or swimming costume or swimming trunks, (swimming goggles are also highly recommended but not compulsory), a road worthy bike which must include working brakes, a quality cycling helmet: these are available from a variety of sports retailers prices start from around £30. All other items such as elastic laces, specific triathlon clothing are not a necessity but will help you on the day. Any handle bars ends should be sealed or covered with tape so the hole is plugged.

Directions to the RICHMOND HOLIDAY CENTRE, SKEGNESS.

Fresh Fitness (Sports Centre) is found at Richmond Holiday Centre off Richmond Drive in Skegness. PE25 3TQ
Skegness is located approximately:
Lincoln 42 miles-1 hour 10 mins
Sleaford 40 miles- 1 hour
Louth 23 miles-36 minutes
Grimsby 39 miles- 1 hour
Nottingham 79 miles – 2 hours 10 mins

Accommodation

For local information including accommodation please look here:
Please use the link to Richmond Holiday Centre <http://richmondholidays.com/> or call them on [01754 762097](tel:01754762097) for 30% discount on accommodation depending on availability.

Car Parking

Please Note: There is parking for athletes at the venue **but spectators will need to park on William Way PE25 3PL (a 5 min walk). The parking is free. Once the race is underway cyclists will be coming out of the main entrance to Richmond Holiday Park so to avoid congestion please try to arrive at the venue before 9.20am – even if you have a later swim time.**

Race Registration

Saturday 5-6pm & Sunday 07:15 – 9.15am

The registration area will be in the Registration Gazebo at the SBR Events Race Village at Richmond Holiday Park; Please ensure that before registering you know your race number. This can be found either from the competitors entries list on our race website or on the board by the registration area. If you have applied for a BTF Day Licence when entering (by entering a non BTF entry), this will be emailed to you before race day. If you did not apply for a BTF Day Licence, then you will be required to show your 2017 British Triathlon Federation Race Licence. If you are unable to do this, for any reason, then you will be required to purchase one for £5 before being allowed to register. There will be NO exceptions to this ruling. If you have a 2017 British Triathlon Federation Race Licence, please bring it with you. **Please note that all athletes will be required to show some form of photographic identification if you do not have a 2018 British Triathlon Federation Race Licence.** This is to stop people exchanging entries & ensures that all competitors are insured to compete in the event. You will be given 2 Tyvek race numbers and 1 bike frame sticker & 1 helmet sticker. You are given 2 Tyvek race numbers as you need to wear 1 on your front for the run, and 1 on the reverse for the bike- if you use a race belt attach them with the inside one upside down so that if it flaps up your number can be seen. You will also be given a Tyvek wristband; you need this and a race number to put your bike into transition. Please keep these safe, without them you will be refused entry into the transition area. Next collect your Timing Chip; this should be attached to your ankle with the chip facing outwards. Do not lose your Timing Chip as you will need it to race.

Race Briefings – 08:00 & 9:05

These will take place next to the transition area. If you are unsure about anything please attend. The Race Briefings will inform you of any last minute route changes and safety points. If you have any questions or queries on race day, please ask them after Race Briefing.

Transition Area

The Transition Area is situated on the grassed area near the pool next to the children's play area. This is a fully secured area for competitors only, it is where you will keep your bike during the swim and run sections. Before you start, you will need to set up your transition at the location matching your race number - all the kit you require during the race. This will include your cycling helmet, a bike in road worthy condition, shoes for cycling and running, your race numbers plus any clothes you wish to put on after the swim. Your bike frame sticker should be applied to your bike along the top tube or stem close to your handlebars, before you enter transition. To get into the Transition Area you must show your race number at ALL times, apart from when you exit the swim going into the bike. You will also be asked to show both your race number & bike frame number when taking your bike out at the end of the race. This is for your security. Please understand this will cause queues during peak times, but it is for your benefit. The Transition Area will not close during the event, so please understand that if you are not racing that you will be asked to make a clear way for racing competitors.

It is important that you understand all of the entrance and exit points of the transition before you start. There are also specific points where you must mount and dismount your bike. An important rule that must be adhered to: **'competitors are required to fasten their helmet before touching their cycle in the transition area.'**

Do not walk close to the timing mats at transition before you start the race - there will be a separate entry/exit area for you to take your bike in & set up what you need to race.

You have limited space to leave your shoes & clothing. There will be a secure area within transition for oversized boxes & bags. You may be allowed a small bag next to your bike. BTF race officials may ask you to remove anything that they believe marks your spot & gives you an unfair advantage.

The Team Event

Only one person is required to register for the whole team, but will be required to show ALL of the 2017 BTF Race Licences or they will need to pay £5 per person if they are not registered with the BTF. All relay team tags will take place by the team's bike racking position, inside the transition area. The swimmer will finish their swim, exit through the fire doors and then run to tag their team cyclist inside the transition area. The cyclist's bike must stay racked until the swimmer has tagged the cyclist. When the team cyclist finishes, he/she must re-rack their bike before tagging the team runner. All tagging will take place by passing the Timing Chip to the next team member.

Race Start 09:00

The first wave of competitors will start at 08:30, the timekeeper will start 5 swimmers at 4-minute intervals. It is expected that the last competitor will start at approx. 10:00. Please ensure that you arrive at the pool area 5-10 minutes before your wave start time.

Race Timing by JC Race Solutions

Providing fast and accurate results is the most critical part of any race. Each athlete is given a "chip" that generates a unique signal when it crosses through an antenna field. By using a database to assign each participant's personal information to each chip, timing software can easily calculate each participant's time and finish place.

To maximise the success of getting your time there are a few things required:

a) Wear the chip!

b) When attached to the strap wear it just above your LEFT ankle (i.e. on the opposite side to the chain wheel) with the chip pointing away from your leg. Our antenna fields will be positioned about this height, if you wear it anywhere else it may not be read.

*If you have worn your chip correctly we will have a time for you. On most occasions we will have full provisional results immediately after the event:

Participant List & Online Results will be available here [Start List](#) & [Results](#)

- A print-out of your Result will be available at the Timing tent as soon as you finish - just come over and enter your Runner's number.
- A Finisher's certificate will be emailed out to you when the Results have been verified.
- Providing there is a reasonable GPRS signal then your *provisional* result will be texted to you shortly after you finish if you provided a mobile telephone number.

****Please return your chip back**** at the finish line especially if you have to retire early.

Unfortunately due to the high cost of the chip we need to charge you £10 if you fail to hand it in.

Race Numbers

Race Numbers must be worn on the back during the bike & the front during the run. Numbers must be pinned at all four corners, failure to display your number correctly could result in a time penalty. Triathlon belts are allowed but it is recommended that two be worn. One belt for the top of the number & one belt for the bottom to stop your number creasing up and becoming unreadable. If you wear one belt pin it on the reverse upside down so that if it flaps up it is still readable!

NB. We will have safety pins at registration.

The Swim – 400 Metres (16 Lengths) – No tumble turns

The swim will take place in the 25 metre indoor heated pool at Fresh Fitness, Richmond Holiday Centre. Swim 16 lengths – 400 meters, you cannot walk along the bottom of the pool. Please arrive on poolside approx. 10 minutes before your start time. The timekeeper will start waves of 5 swimmers every 4 minutes between 08:30 and 10:00. Your start time will be worked out from your estimated swim time that you fill in on your entry form. By doing this it is hoped that you will be with competitors of a similar standard during the swim section. There will be other competitors in the same lane during the race, it is the responsibility of the faster swimmer to overtake, but also remember that it is much easier to swim behind someone (drafting). It is your responsibility to count your own 16 lengths. You will be supplied with either a latex or silicon swim hat, which is optional. If you wish to get changed for the bike and run section after the swim, you may either use the swimming pool changing rooms or change inside the transition area – but please note nudity is not allowed.

There are NO TUMBLE TURNS allowed on this race. There are steps in one lane which makes it dangerous to tumble turn in the shallow end & we cannot allow unfair advantage to other swimmers. Safety comes first.

Please Note: Competitors only allowed on the poolside. There is a separate viewing area for non-competitors.

The Bike – 19KM (2 LAPS)

From the swim, exit through the side door at the top end of the pool, you will then run straight into the transition area via our mesh funnel. The surface is all grass. You must run or walk with your bike out of transition & turn **LEFT** onto the private road, walking or running until you cross the mount line. This road does have potholes & uneven surfaces. All of the roads that we use for the cycle section are open to the public; please adhere to all rules of the Highway Code, including 30 MPH speed limits. Please note that you are not allowed to take pace from other competitors during the cycle section, this means that you are not allowed to ride closer than 10 metres to another rider (measured from the leading edge of the front wheel) unless overtaking. You only have 20 seconds to

overtake another competitor. **There will be 2 laps of the course.** After returning from Gibraltar Point into Seacroft Square you circle around the square & return to Gibraltar point for lap 2, then cycle back to Seacroft Square & turn left to Seacroft Drive towards Richmond Holiday Park. PLEASE CHECK COURSE MAP. When you reach the end of the bike section, dismount your bike at the appropriate point, re-rack your bike back into your original racking position and then take your helmet off. The bike route can be viewed below.

Foot Down Policy

There are no foot down points on this course.

EVERYONE MUST OBSERVE THE HIGHWAY RULES ON EMERGING FROM THE JUNCTIONS. Failure to adhere to this request by travelling through **ANY** of these junctions without taking care of other oncoming road users & cycling dangerously, **you will be disqualified.** Marshals are present at each of these junctions to monitor your cycling. RACE SAFE! - for your safety and the protection of motorists already using the highway.

AQUATHLON & AQUABIKE COMPETITORS

Aquathlon: Please enter transition area via the SWIM IN- the same way as triathlon competitors, put on shoes & any clothing & head out straight onto the run. Please ensure you run around the bike racking following our signage before exiting transition through the RUN OUT exit.

Aquabike: Please enter transition area via the SWIM IN- the same way as triathlon competitors, put on shoes & any clothing & head out on your bike. Your race will finish when you cross the BIKE IN mat at transition. You can then use the RUN OUT exit to leave transition & cross the finish line at your leisure or a fast sprint! The finish line time will not count.

The Run – 5KM (2 LAPS)

Exit the transition area, in the same direction you went on the bike but on leaving the grass turn **right** onto the private road. The run course is fully marked with signage, we have also placed marshals at a water station at the entrance to the Coastal Eco Centre. The route uses a mixture of tarmac, trail, track & grass. Please be aware that there might be occasional vehicles on the road as there is residential house on here & access to the Eco Centre. You need to run up the private road to the Eco Centre, around a fully signed trail run, back to the Holiday Park & then repeat for second loop. You will pass a water station 4 times on the run (it is based at the entrance to the Eco Centre)

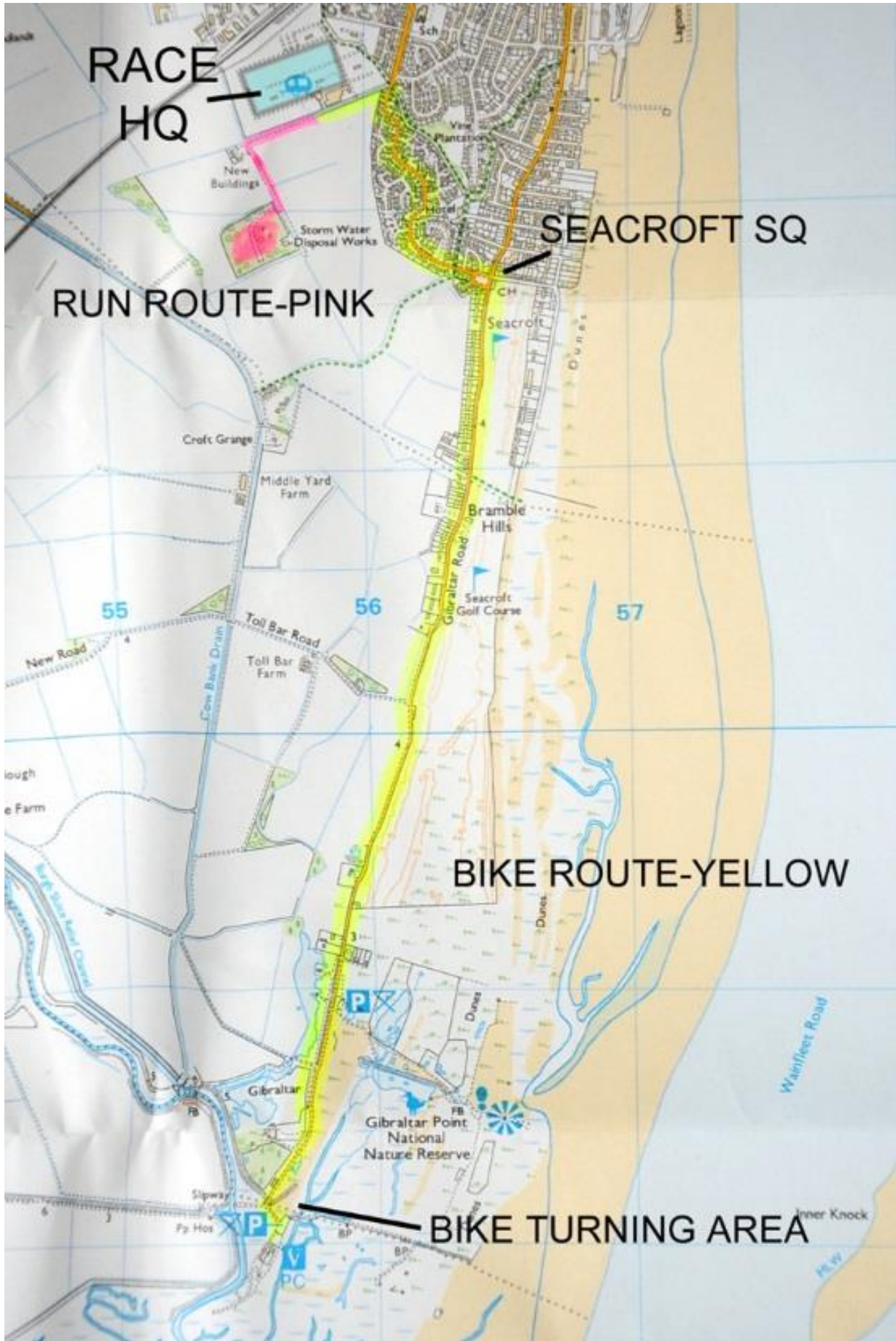
Littering

Please do not drop litter including gel wrappers on the bike or the run route. There will be bins at the water station, near transition & at race village. If you took it out with you, please bring the wrapper back & dispose of it responsibly. Our venues are very generous in letting us use their facilities. Richmond Holiday Park is a clean, modern park, & Gibraltar Point is an environmentally friendly Wildlife Trust & the Coastal Eco Centre recycles & protects all forms of plants & wildlife so this is important. Thank you.

Course Reconnaissance

The bike and run course will be set up from Saturday.

PLEASE SEE MAPS BELOW & FURTHER INFORMATION



RACE HQ

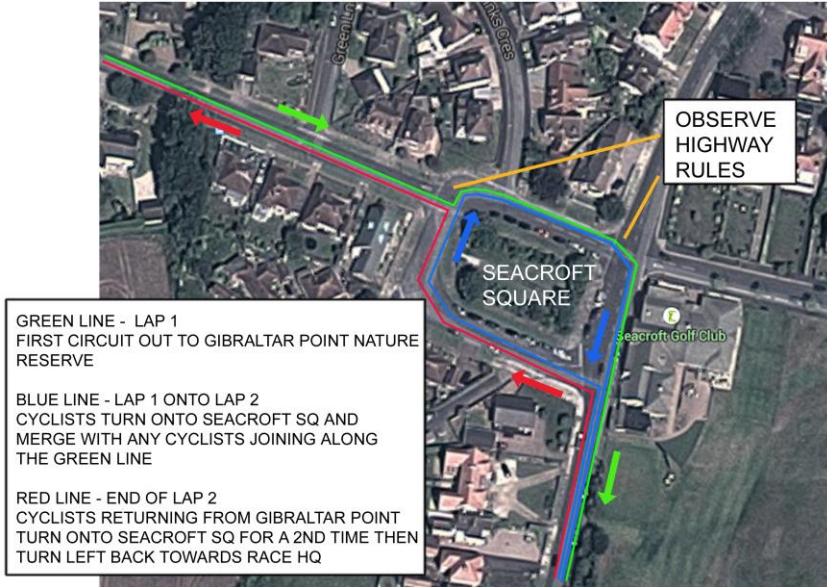
SEACROFT SQ

RUN ROUTE-PINK

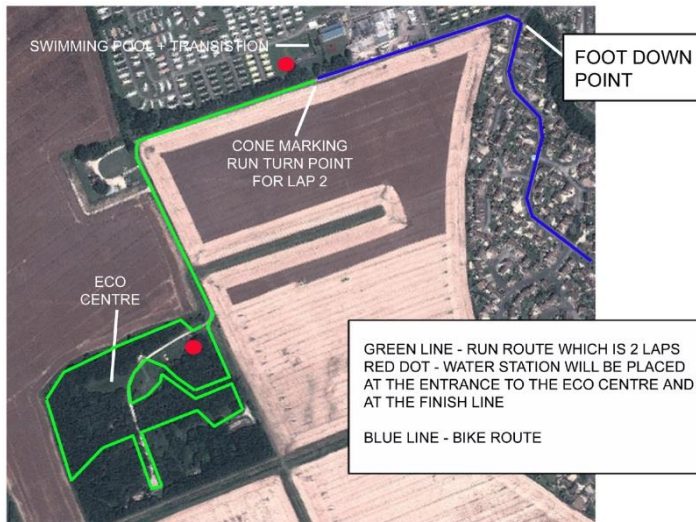
BIKE ROUTE-YELLOW

BIKE TURNING AREA

BIKE - SEACROFT SQUARE TURNING AREA



RUN - RICHMOND PARK TO THE ECO CENTRE + THE START OF THE BIKE



Medical Cover

The safety of our competitors is paramount. Onsite during the event will be Jola Medical, on the day there will be a team of medics and paramedics plus an ambulance equipped to NHS standard, with manual defibrillator / cardiac monitors, ventilators, and pulse oximetry. If before, during or after the event you feel that you require any type of medical care, please do not hesitate to contact an event marshal.

Medical Conditions

We request that all competitors write their next of kin & contact details on the back of their race numbers using a waterproof pen. If you have any type of medical condition or are taking any type of medication please write a large 'MC' on the bottom left of your race number. Please write your medical condition fully on the back of your number also. This will only be used in the event of you being involved in an accident or are unwell.

Trophies & Prizes

There will be trophies in the following categories:

*Prizes - **Triathlon**

Belvoir Fruit Farm cordial & SBR Events Buff for Male & Female Triathlon Winners!

*Trophies for 1st, 2nd, 3rd man & woman

*Age group trophies for 40-49, 50-59, V60+ in male and female

*Prizes - **Aquathlon** – race discount codes & SBR Events Buff for Winner

*Prizes - **Aquabike** – race discount codes & SBR Events Buff for Winner

The Presentation will take place at approximately 12pm or within 30 minutes of the last competitor finishing. Please be in attendance to collect your prize.

Penalties & Appeals

ALL penalties issued by the British Triathlon Race Referee will be displayed on a Penalty Board at the Timing Tent. Appeals against these penalties must be made in writing to the race referee within one hour of a penalty being notified and be accompanied by a fee of £30.00 refundable if the appeal is upheld. It is your responsibility to check this Penalty Board.

The full list of British Triathlon Federation rules can be found here [British Triathlon Rules - updated 2018](#)

RACE VILLAGE

Arrive at Race Village to collect your medal, get a drink.

(Please only take just 1 of everything as we have limited supplies & other athletes will go short)

Paper bag for;

Banana

Bottle of water

Packet of crisps

Race leaflets

Discounts on various leaflets

If you are from a running club, athletics association or triathlon club please bring your team flags with you & a marshal will display it in the Race Village.

At the Race Village in Richmond Holiday Park you will find gazebos for registration, secure baggage holding area, sports therapists, toilets at Fresh Fitness, Skegness Triathlon Club, BBQ & hot drinks from caterers at Richmond Holiday Park, JC Race Solutions chip timing results & first aiders/ambulance.

There will be 2 water stations at the course. 1 is at Coastal Eco Centre & 1 at the finish line but please feel free to bring your own isotonic drinks, energy bars or gels if you prefer. Please ensure you don't drop any litter & take your rubbish home with you to preserve the environment & the wildlife on this course.

Pre or post-race recovery massage

Local 'Injury & Sports Therapy' will be on hand to provide FREE pre and post-race massage by Harry & his team. No bookings are needed so why not find our tent at the start/finish line and gain the performance enhancing and recovery aiding benefits that sports massage offers. Any aches, pains or injuries? Feel free to ask us for free advice, we always like to go the extra mile in helping everyone. Here at Injury & Sports Therapy we aim to deliver a professional service at affordable prices. Our Therapists utilise a wide range of advanced techniques to assess, find and treat the cause of your pain and employ after care advice to help prevent re-occurrences. By offering mobile treatments we quite literally go the extra mile to ensure customer satisfaction combined with

a quality service. If you would like any further information feel free to visit our Facebook page: <https://www.facebook.com/injurysportstherapy/> Website: <http://istherapy.wix.com/istherapy> or contact us on: 07903024889 or isttherapy@outlook.com

CLOTHING

There will be a triathlon themed clothing range available on the day designed by SBR Events.

Tech T-shirts - £15 & hoodies - £30

Discounted clothing £10 t-shirts & £25 hoodies

You can pick up garments for cash on the day or place an order & pay by BACS.

FOOD

Richmond Holiday Park are kindly providing hot drinks & BBQ including vegetarian options at amazing good value. Drinks £1 & hot food £2-4.

Withdrawals

If you wish to withdraw from the event, then please follow the guidelines contained within our 'Terms & Conditions' on our website here <http://www.sbrevents.co.uk/terms-conditions> . Please note that you are not allowed to give your entry away, all competitors will be asked to show some form of photographic identification before they are allowed to register.

Race Office Closure

The SBR Events Limited office will be closed from Friday 11th May at 13:00. Please do not leave messages or send emails regarding this event, as we will be on site setting up for the event. If you desperately want to chat about anything race wise, we can be reached on 07850 572838. Please call if you know of anyone that could marshal!

Race Volunteers – Please Help

No event like this can run smoothly without the help of many marshals. If you have friends or family that will be supporting you at the event, please ask them if they would be willing to give up a few hours to help out. We try to buddy everyone up & make it fun. All marshals will receive a free flask, hot food & drink and either a £20 discount code towards a future SBR Events race or a SBR Events t-shirt. If you know someone that could help please email calsie@sbrevents.co.uk. You do not require any previous experience or knowledge on event marshalling to become a race marshal; any training required will be given on race day.

SBR Events

We will be organising a number of other multi-sport and running events throughout 2018 - please visit www.sbrevents.co.uk

Don't forget this is part of Lincs Tri Series with Louth Triathlon on Sept 2nd

Next up is Tallington Lakes Triathlon & Aquathlon – a superb open Water triathlon & aquathlon over 3 distances

Next running event is Grimsthorpe 10 a beautiful trail run on private land in Lincolnshire at Grimsthorpe Castle - chose from 5k, 10k, 10miles or half marathon!

Thank You!

It takes a great amount of work to organise an event such as this. Special thanks go to our Team of Officials that help to organise all of our events: Fresh Fitness & Richmond Holiday Centre for the venue & the staff for their support and energy. The Coastal Eco Centre for use of land for the run element as well as Gibraltar Point Nature Reserve for use of their car park. East Lindsey District Council for allowing the event to take place, our race partners who make up race village plus all of our athletes for entering.

Further Information

Any questions related to the event can be answered by emailing info@sbrevents.co.uk All the information here is believed to be true at the time of going to press. Changes may be required ensuring that the event is organised safely and within the law, and these changes will be made without notification. The organiser has the final decision.